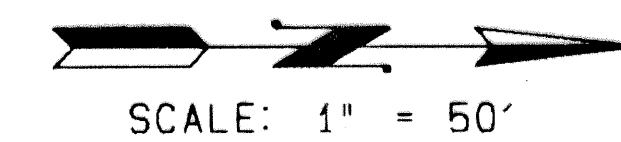


SOMERSET AT WOODFIELD COUNTRY CLUB

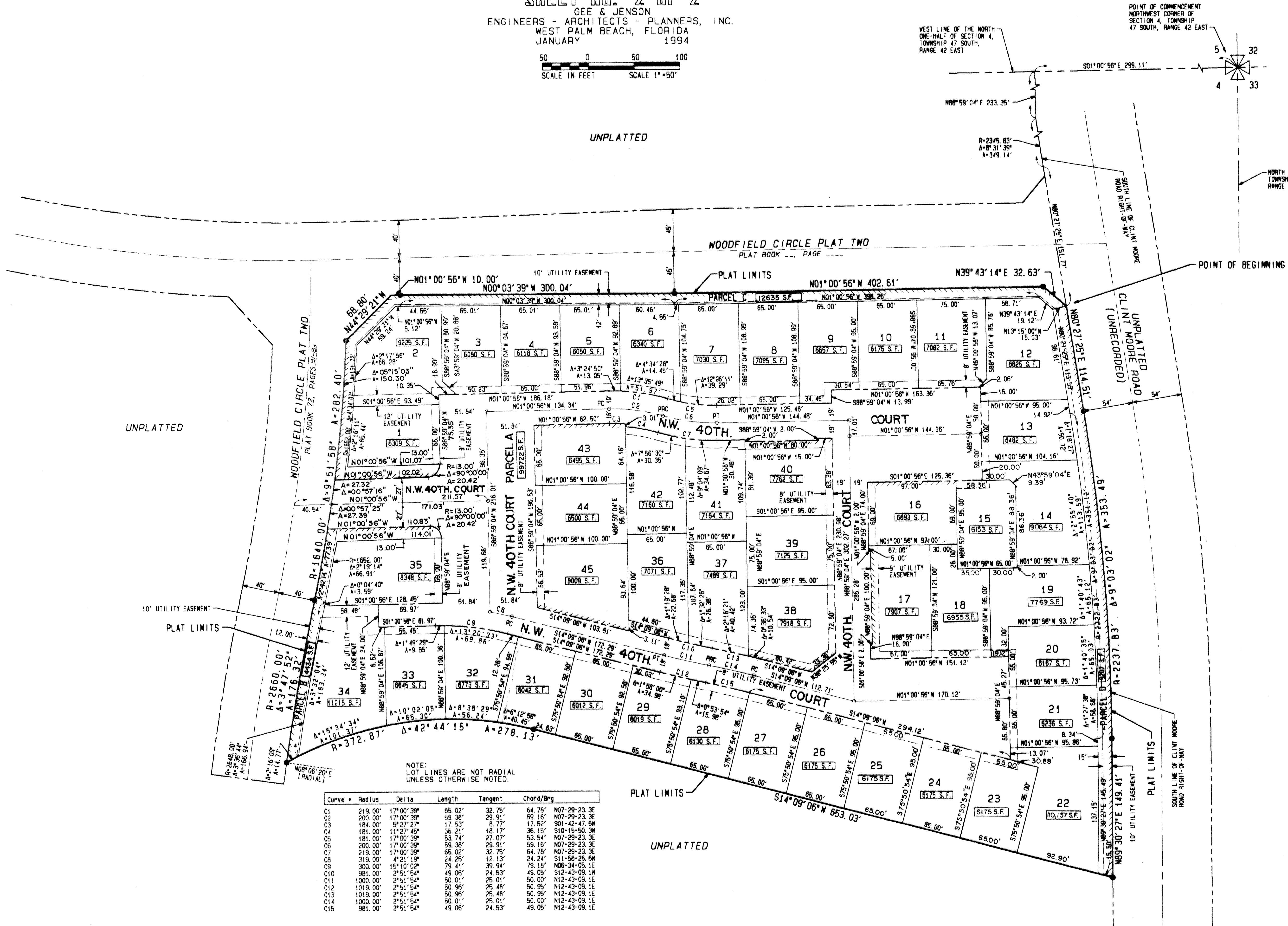
IN PART OF SECTION 4, TOWNSHIP 47 SOUTH, RANGE 42 EAST
CITY OF BOCA RATON, PALM BEACH COUNTY, FLORIDA
SHEET NO. 2 OF 2

GEE & JENSON
ENGINEERS - ARCHITECTS - PLANNERS, INC.
WEST PALM BEACH, FLORIDA
JANUARY 1994



153

STATE OF FLORIDA
COUNTY OF PALM BEACH
This plat was filed for
record at _____ M. this _____ day
of _____ 1994, and duly
recorded in Plat Book No. _____
on Pages _____ thru _____
DOROTHY WILKEN
Clerk Circuit Court
By _____ D.C.



NOTE: LOT LINES ARE NOT RADIAL UNLESS OTHERWISE NOTED.

Curve	Radius	Delta	Length	Tangent	Chord/Brg
C1	219.00'	17°00'39"	65.02'	32.75'	N07-29-23.3E
C2	200.00'	17°00'39"	59.38'	29.91'	N07-29-23.3E
C3	184.00'	5°27'27"	17.53'	8.77'	S01-42-47.6W
C4	181.00'	11°27'45"	36.21'	18.17'	S10-16-50.9W
C5	140.00'	17°00'39"	53.74'	27.07'	N07-29-23.3E
C6	200.00'	17°00'39"	59.38'	29.91'	N07-29-23.3E
C7	219.00'	17°00'39"	65.02'	32.75'	N07-29-23.3E
C8	319.00'	4°21'19"	24.25'	12.13'	S11-56-26.6W
C9	300.00'	15°10'07"	78.41'	39.94'	N08-34-35.1E
C10	981.00'	2°51'54"	49.06'	24.53'	S12-43-09.1W
C11	1000.00'	2°51'54"	50.01'	25.01'	N12-43-09.1E
C12	1019.00'	2°51'54"	50.96'	25.48'	N12-43-09.1E
C13	1019.00'	2°51'54"	50.96'	25.48'	N12-43-09.1E
C14	1000.00'	2°51'54"	50.01'	25.01'	N12-43-09.1E
C15	981.00'	2°51'54"	49.06'	24.53'	N12-43-09.1E

SUBDIVISION # SOMERSET AT WOODFIELD
BOOK # 73
PAGE # 153
QUAD # FLOOD MAP
SE # ZONING
RIP NAME # 4/91/CLC/BGA
ZIP CODE #

COMPUTED D. BACHOR
DRAWN D. BACHOR
CHECKED
APPROVED
JOB NO. 93-330